

1. Features:

- Anti-scratch acrylic surface.
- Built-in LED indicator for setting.
- 86 x 86 mm installation standard.
- Power supply protection
- Auto switch off after 5 minutes.
- IEC conform design.



Radio Control Receiver RTX-245
2-202-24-02

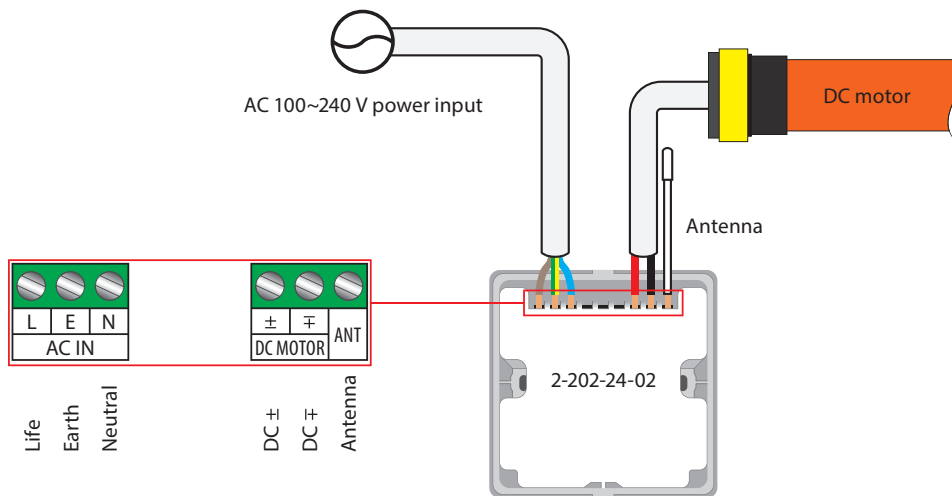


Radio Control Handheld Transmitter RTX-240
2-201-24-02

2. Parameter:

Model No.	Input voltage	Working temperature	Loading power	Receiving frequency	Receiving sensitivity	Transmitter quantity	Operation
2-202-24-02	AC 100~240 V 50/60 Hz	-40°C – +85°C	≤ 30 W	433.92 MHz	-100 dBm	≤ 20	remote/manual

3. Installation and wiring:

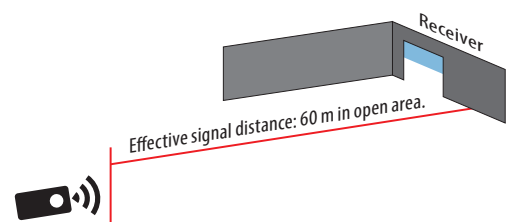


⚠ Installation note:

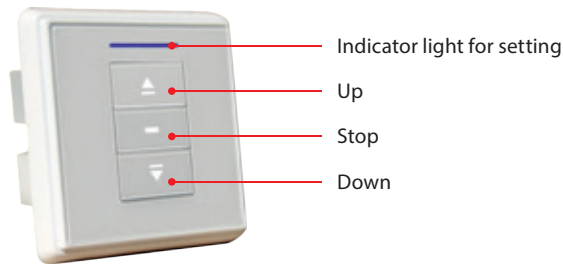
All electric works and installations should be performed by trained and authorized professionals only. Please observe local regulations.

Besides the Standard of Electric Safety, please follow:

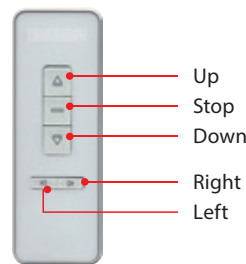
- Do not install the receiver in or too close to any metallic parts. This could affect the receive distance.
- Effective signal distance: 60 m in open area.
- Minimum distance between the receiver and the floor: 1.5 m.
- Minimum distance between the receiver and the ceiling: 0.3 m.
- Minimum distance between the receiver and the transmitter: 0.2 m.
- To ensure safety, make sure that the power has been cut off before wiring.
- Avoid static disturbance which could damage electronic components.
- Use flexible cables.
- Ensure no longitudinal force is acting on cables after installation.



4. Product diagram:



Radio Control Receiver RTX-245
2-202-24-02

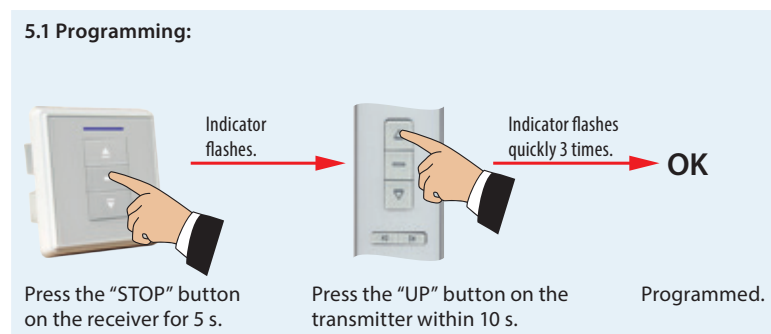


Radio Control Handheld Transmitter RTX-240
2-201-24-02

5. Installation instruction:

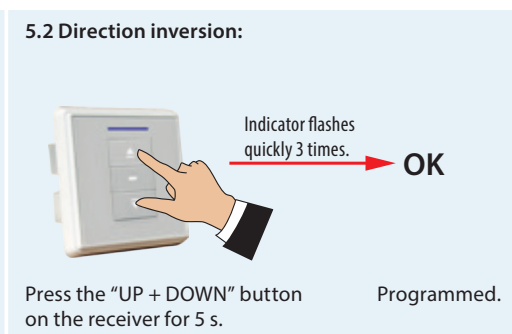
- 5 mins is the longest operation time for motor
- 0.5 s to transfer for up/down for motor
- Please choose the right channel if the transmitter is multi-channel.

5.1 Programming:



Press the "STOP" button on the receiver for 5 s. Press the "UP" button on the transmitter within 10 s. Programmed.

5.2 Direction inversion:

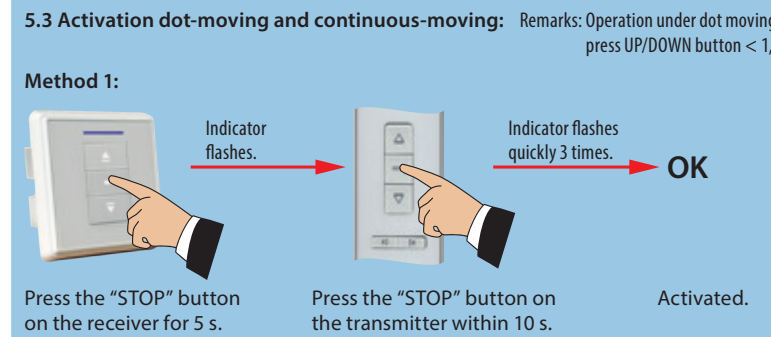


Press the "UP + DOWN" button on the receiver for 5 s. Programmed.

5.3 Activation dot-moving and continuous-moving:

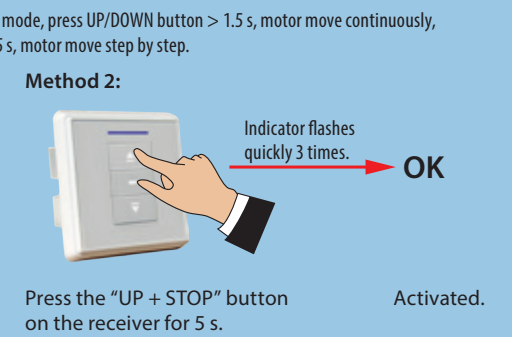
Remarks: Operation under dot moving mode, press UP/DOWN button > 1.5 s, motor move continuously, press UP/DOWN button < 1,5 s, motor move step by step.

Method 1:



Press the "STOP" button on the receiver for 5 s. Press the "STOP" button on the transmitter within 10 s. Activated.

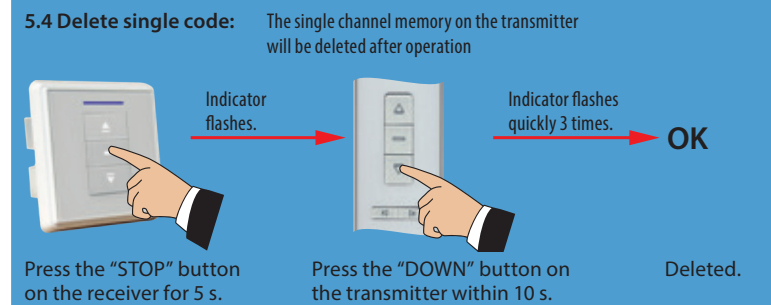
Method 2:



Press the "UP + STOP" button on the receiver for 5 s. Activated.

5.4 Delete single code:

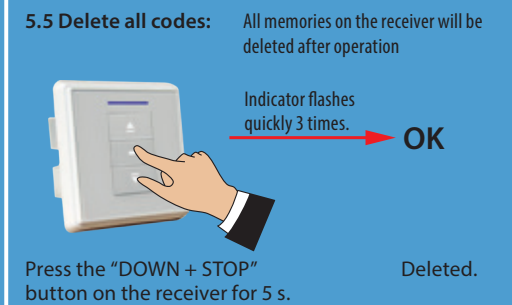
The single channel memory on the transmitter will be deleted after operation



Press the "STOP" button on the receiver for 5 s. Press the "DOWN" button on the transmitter within 10 s. Deleted.

5.5 Delete all codes:

All memories on the receiver will be deleted after operation



Press the "DOWN + STOP" button on the receiver for 5 s. Deleted.

6. Troubleshooting:

No.	Error Description:	How to solve:
1	Indicator on receiver does not light up.	Please check wiring connection for the receiver.
2	Indicator on transmitter does not light up or is low.	Please check the battery power and polarity.
3	Transmitter and receiver work, but motor does not.	Please check the motor wiring.