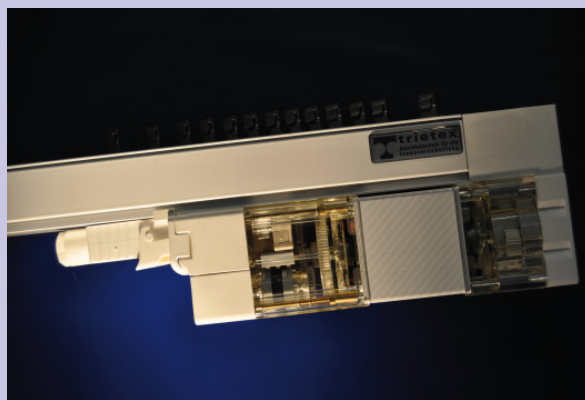


## Motorization for Vertical Blinds

### Vertical Blinds - System Specifications

Mounting	Various fixing elements as clips, rail supports or adjustable mounting angles are at your disposal. By means of a mounting profile, you may hide the rail inside the ceiling.
Operation	Star Systems with 230 V synchronous motor Compact with 24V DC motor.
Rail sizes	Star Standard 46 x 36,5mm Star version „High“ 47,1 x 50,6mm Compact 44 x 25,2mm
Rail colours	White or black colour coated or aluminium painted anodized. Special colours on request.
Motor colours	Star Elektra, Star Elmatic: white, grey, black Compact: white
Slat sizes	63, 80, 89, 100, 127 or 160mm



#### Huegin-Trietex GmbH

Dammstrasse 5a  
D-79588 Efringen-Kirchen / Kleinkems  
Germany  
Phone +49 7628 9100 - 0  
Fax. +49 7628 9100 - 40  
E-Mail: [info@trietex.de](mailto:info@trietex.de)  
Internet: [www.trietex.com](http://www.trietex.com)

Technical data are subject to change.  
Limit sizes are only estimations and without obligation.  
Trietex is a registered trademark of Huegin-Trietex GmbH.

Your authorized Trietex Reseller:



## Trietex Vertical Blinds - A Quality Choice.

Whatever Trietex System you choose - you can rely on making a good decision. All motors are engineered and manufactured in Germany with a strict quality management system.

The manifold variations of our vertical blind systems with extremely comfortable motorized operation allows the application of vertical blinds for nearly all window types, at home, in your wintergarden but also in office areas.

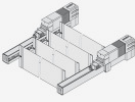
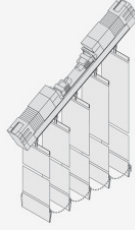
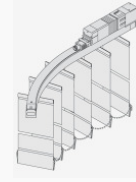
Our systems can be applied for regular rectangular windows, sloped or curved for bay windows or as plafond solution for skylights.

Whether you choose a system with a 230 Volt or 24 Volt electric drive, with or without remote control - Trietex vertical blinds allow a continuous light regulation.

On a sidenote. All Trietex Synchronous motors do have 0 Watt power consumption in standby as they are physically disconnected from the power line making it an „eco-logical“ choice for smart and green building control.

Trietex Vertical Blind Systems are available as a completed unit or as components for fabricators.

## Special Shading Applications

System	Plafond	Slope	Curved
			
Star Elmatic	Yes	Yes	
Star Elektra	Yes		
Star Elektra Slope		Yes	
Corvus Elektra			Yes
Compact	Yes	Yes	

## Trietex Vertical Blind Motor Types

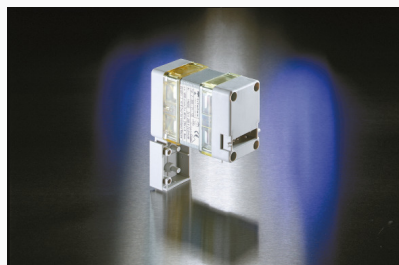


### Star Elektra - The Project Choice

Whenever it comes to a solid solution for motorizing vertical blinds - Trietex' Star Elektra System sets the standards. Consisting of a brushless 230 Volt synchronous motor in combination with two rods for tilting and traversing it allows smooth, silent and reliable operation even of heavy draperies.

Flexible options for motor position (on top of the rail or behind the rail) or as tandem system with motorized top and bottom rail and a big range of accessories allow customized solutions that fit.

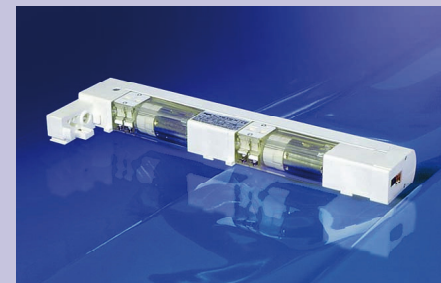
Motors have VDE-Approval (230 Volts) and UL-Approval (110 Volts).



### Star Elmatic - For Tilt Only Operation

Small dimensions for almost invisible operation. This motor series is designed for tilt-only operation. Cord draw is available for traversing as an option.

The slats are tilted by an aluminium rod. A cost effective long-lasting solution for motorizing the most important operation. Available in 230 Volts and 110 Volts.



### Compact - The slim 24 Volts Motor

Trietex Compact for the comfortable operation of vertical blinds motorized by a 24 volts direct current motor. The motor is available with two different gears, the standard gear and the reinforced gear for heavy duty, which runs at half the speed of the standard gear. Independent of which side the motor was mounted, the tilting direction of the slats and the position of the stack can be adjusted and inverted by dip-switches. The end positions can be easily adjusted with buttons on the lower side of the motor. An integrated current protector preserves the motor against mechanical or thermal overload.



### Accessories and Control Options

Several types of radio controls and receiver modules are available for Trietex vertical blinds. The standard remote control for 230 Volt motors comes already with 16 channels. A special group control receiver and sender are available. Frequency of operation is 833 MHz. CE Approved.

A wide range of fixing options for hidden ceiling mounting or normal ceiling mounting or fixing brackets for wall mounting is available.