

**Motorized solutions
for interior blinds.**



Huegin-Trietex GmbH
Dammstraße 5a
79588 Efringen-Kirchen
Germany

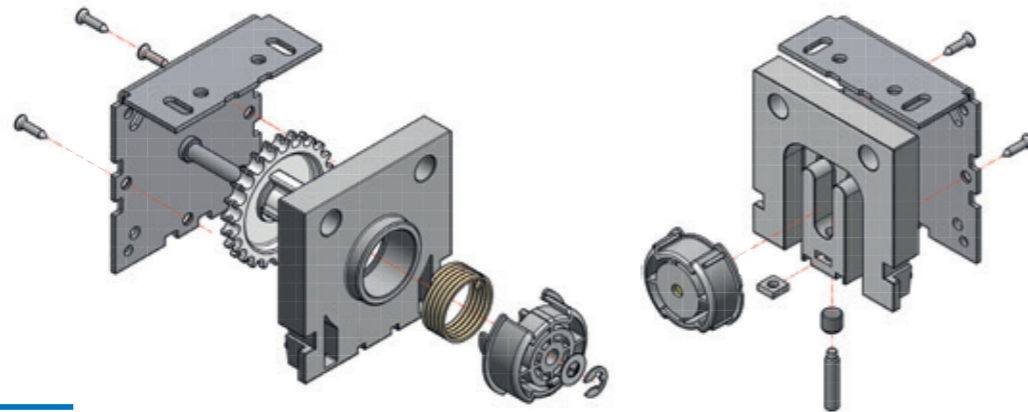
Phone +49 7628 9100 0
Fax +49 7628 9100 40
info@huegin-trietex.com
www.trietex.com



Technical information at a glance:

Gear dimensions without bracket	71.4 x 71.4 x 12.8 mm
Minimum light gap	17 mm
Operation	Chain operation, tubular motor operation
Inside tube diameter	41 mm
Outside tube diameter	45 mm
Maximum width	200 gr/m ² – 2.00 m 300 gr/m ² – 1.80 m
Maximum drop	200 gr/m ² – 3.00 m 300 gr/m ² – 2.50 m
Maximum fabric weight	2 kgs
Hembar	Oval hembar approx. 34.6 x 15.2 mm Rectangular hembar 30 x 8 mm and 41 x 11 mm
Colours of the gear	White and grey, special colours on request

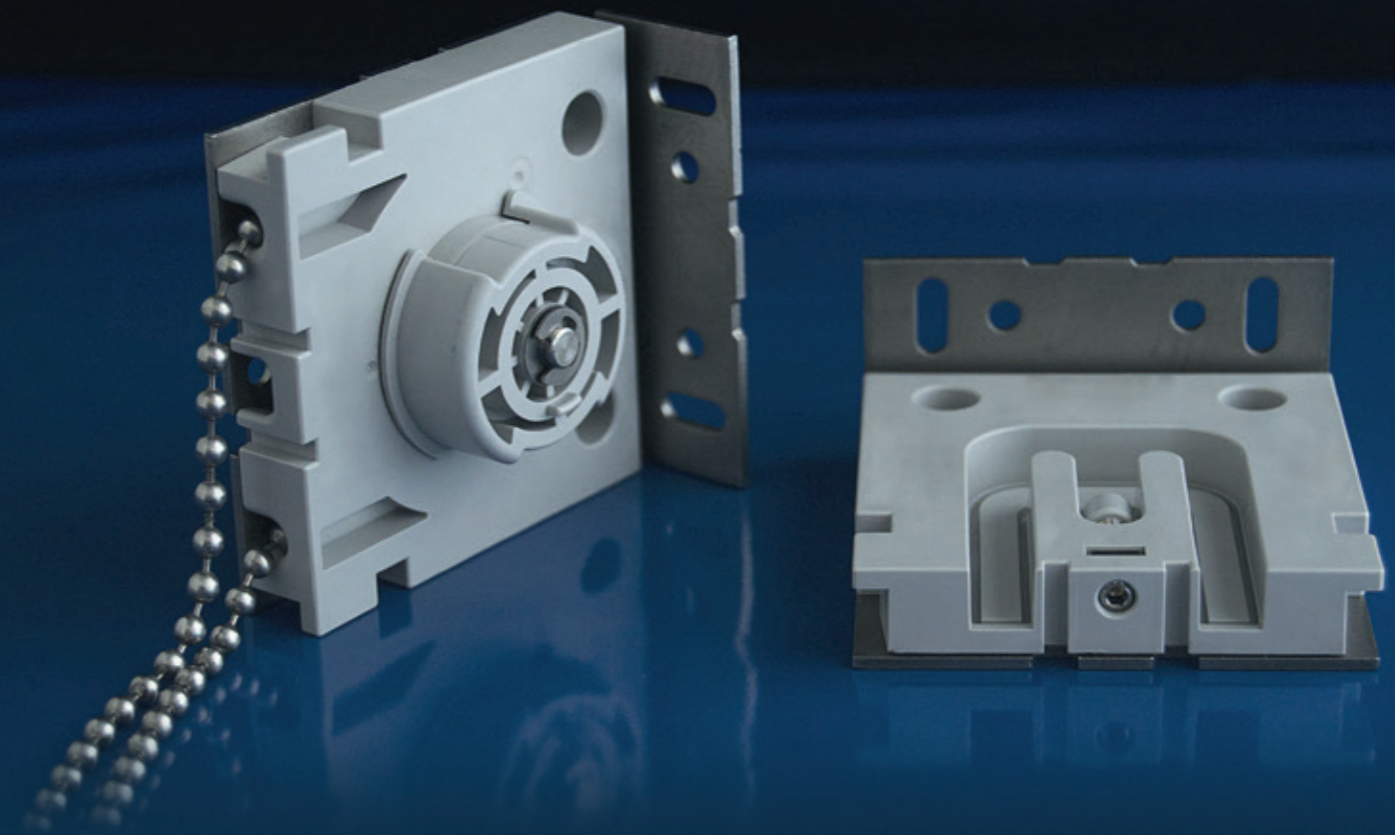
All technical data are subject to change without further notice. Patent Pending.



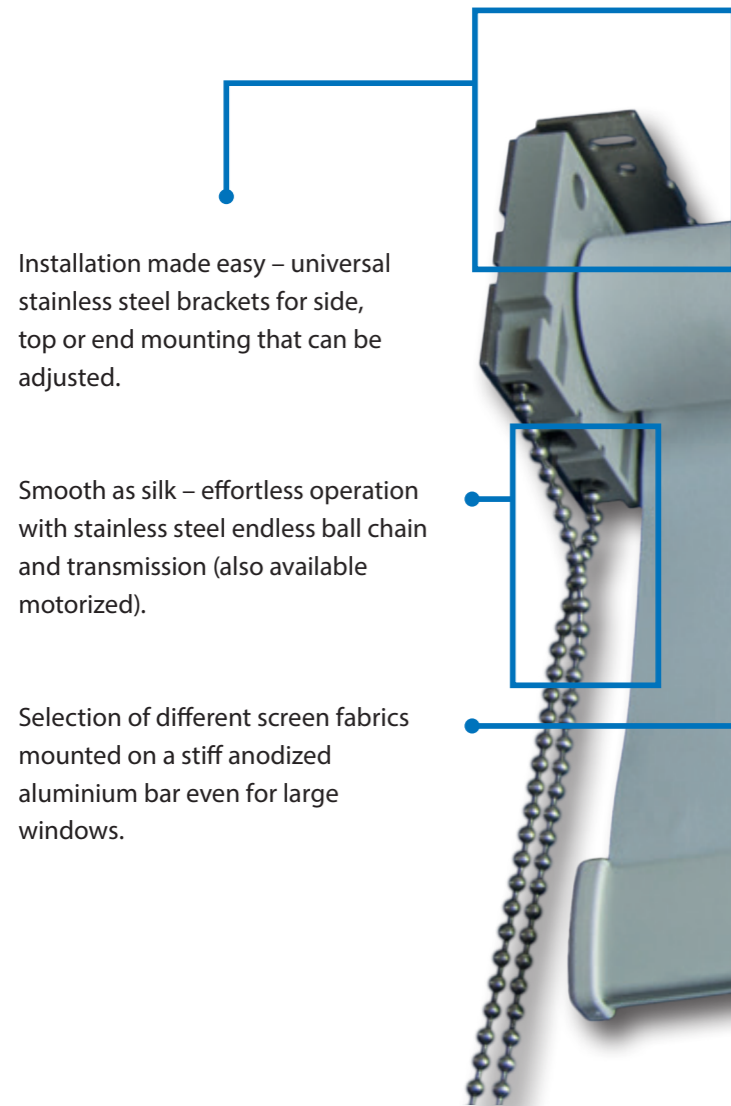
**Motorized solutions
for interior blinds.**

ROLPRO

roller blind system.



Motorized solutions for interior blinds.

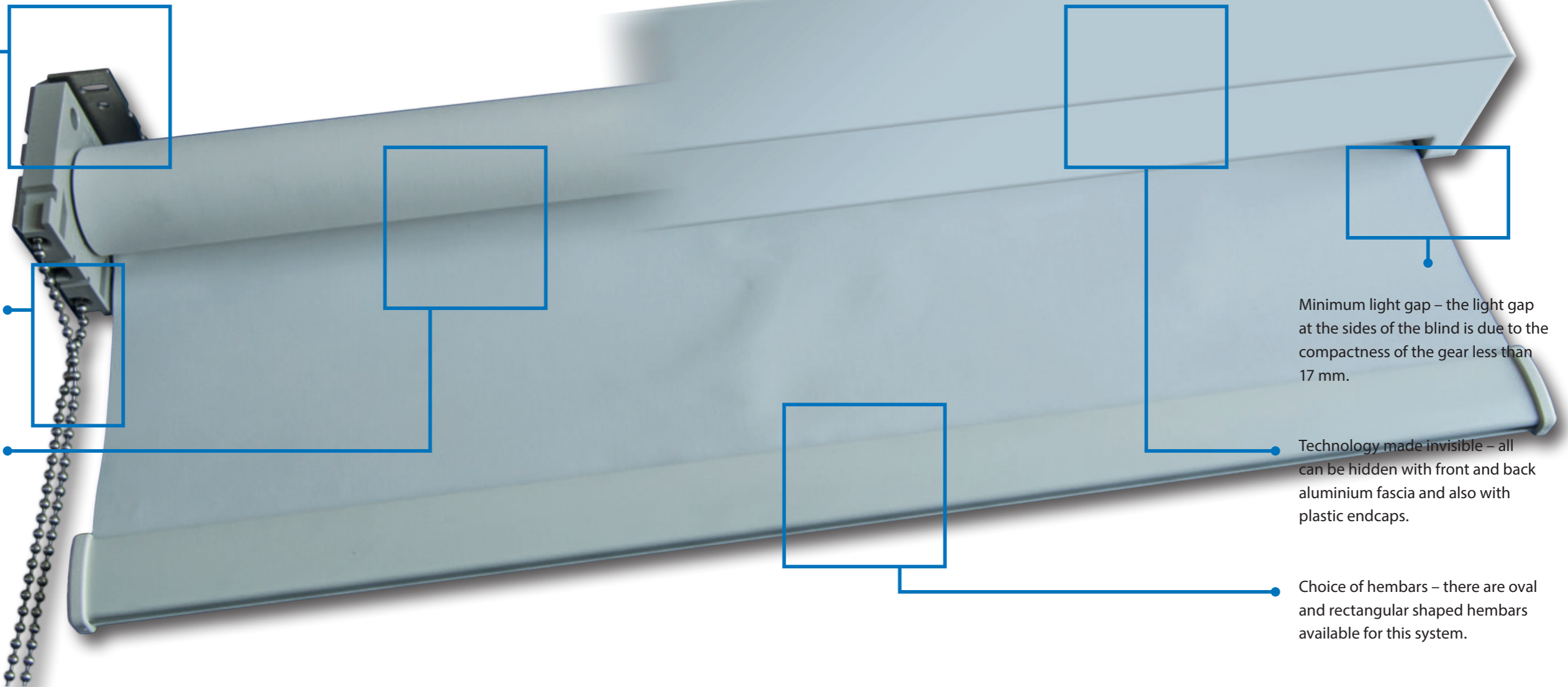


Installation made easy – universal stainless steel brackets for side, top or end mounting that can be adjusted.

Smooth as silk – effortless operation with stainless steel endless ball chain and transmission (also available motorized).

Selection of different screen fabrics mounted on a stiff anodized aluminium bar even for large windows.

Motorized solutions for interior blinds.



Minimum light gap – the light gap at the sides of the blind is due to the compactness of the gear less than 17 mm.

Technology made invisible – all can be hidden with front and back aluminium fascia and also with plastic endcaps.

Choice of hembars – there are oval and rectangular shaped hembars available for this system.

Product Features:

ROLPRO roller blind system – smooth in operation with rock solid durability.

This versatile roller blind system was developed especially with the demands of commercial projects in mind.

No compromises – easy installation, smooth operation and long lasting quality. It all comes in a timeless and understated design that puts the architecture of the building at first place. Developed and manufactured in Germany.

Installation made easy. Self adjusting mounting brackets made of stainless steel for side, top or end mounting. Horizontal adjustment of the 41 mm aluminium tube by simply adjusting an Allen head screw. The tube with the screen fabrics can be taken out easily by just lifting it up and a short horizontal movement.

Design as you need it. Fascias for front, back and sides can be added by simply clipping them on – hiding and protecting the roller blind system.

Smooth as silk. Even large sized roller blinds can be operated without effort and friction. The stainless steel ball chain slides easily through the gear made of high performance plastics.

Rock solid. Stainless steel brackets with a thickness of 2 mm, stainless steel operating cord, strong aluminium bars and carefully chosen plastic materials leave no possibilities for failure.

Minimum light gap. The roller blind gear is just about 13 mm thick leaving a light gap of less than 17 mm at each side of the roller blind providing seamless sun protection.

Well guided. Guide wires or side channels help keeping the fabrics in place.